

AG HR Series

High Rejection Brackish Water RO Elements

The A-Series family of proprietary thin-film reverse osmosis membrane is characterized by high flux and high sodium chloride rejection. AG HR Brackish Water Elements are selected when high rejection and operating pressures as low as 200 psi (1,379 kPa) are desired. These elements are recommended for brackish water with salt concentration (TDS) levels between 1,000 and 10,000mg/l or when very high salt rejection of monovalent ions is required.

AG HR high rejection brackish water elements feature a Fiberglass outer wrap and female end connections.

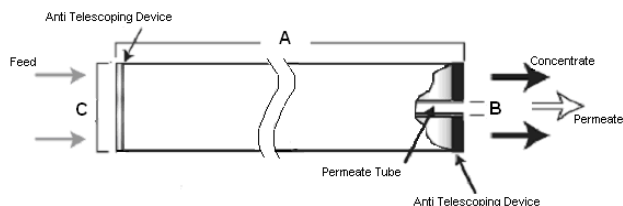


Figure 1: Element Dimensions Diagram

Table 1: Element Specification

Membrane	Thin-film membrane (TFM*)
----------	---------------------------

Model	Average permeate flow gpd (m3/day) ^{1,2}	Average NaCl rejection ^{1,2}	Minimum NaCl rejection ^{1,2}
AG8040F,WET HR	9,500 (36.0)	99.7%	99.2%
AG8040F-400,WET HR	10,200 (38.6)	99.7%	99.2%

¹ Average salt rejection after 24 hours operation. Individual flow rate may vary +25%/-15%.

² Testing conditions: 2,000ppm NaCl solution at 225psi (1,550kPa) operating pressure, 77°F, pH7 and 15% recovery.

Model	Active area ft ² (m ²)	Outer wrap	Part number
AG8040F,WET HR	365 (33.9)	Fiberglass	3040993
AG8040F-400,WET HR	400 (37.2)	Fiberglass	3040994

Table 2: Dimensions and Weight

Model ¹	Dimensions, inches (cm)			Boxed Weight lbs (kg)
	A	B ²	C	
PRO-RO-HR-WT	40.0 (101.6)	1.125 (2.86)	7.9 (20.1)	35 (16)

¹These elements are bagged wet (WT) before shipping.

²Internal diameter.

Table 3: Operating and CIP parameters

Typical Operating Pressure	200 psi (1,380 kPa)
Typical Operating Flux	10-20GFD (15-35LMH)
Maximum Operating Pressure	600 psi (4,137 kPa)
Maximum Temperature	Continuous operation: 122°F (50°C) Clean-In-Place (CIP): 122°F (50°C)
pH range	Optimum rejection: 7.0-7.5, Continuous operation 4.0-11.0, Clean-In-Place (CIP): 2.0-11.5
Maximum Pressure Drop	Over an element: 12 psi (83 kPa) Per housing: 50 psi (345 kPa)
Chlorine Tolerance	1,000+ ppm-hours, dechlorination recommended
Feedwater	NTU < 1 SDI < 5

a product of
ecomagination[™]



Find a contact near you by visiting www.ge.com/water and clicking on "Contact Us".

* Trademark of General Electric Company; may be registered in one or more countries.

©2009, General Electric Company. All rights reserved.